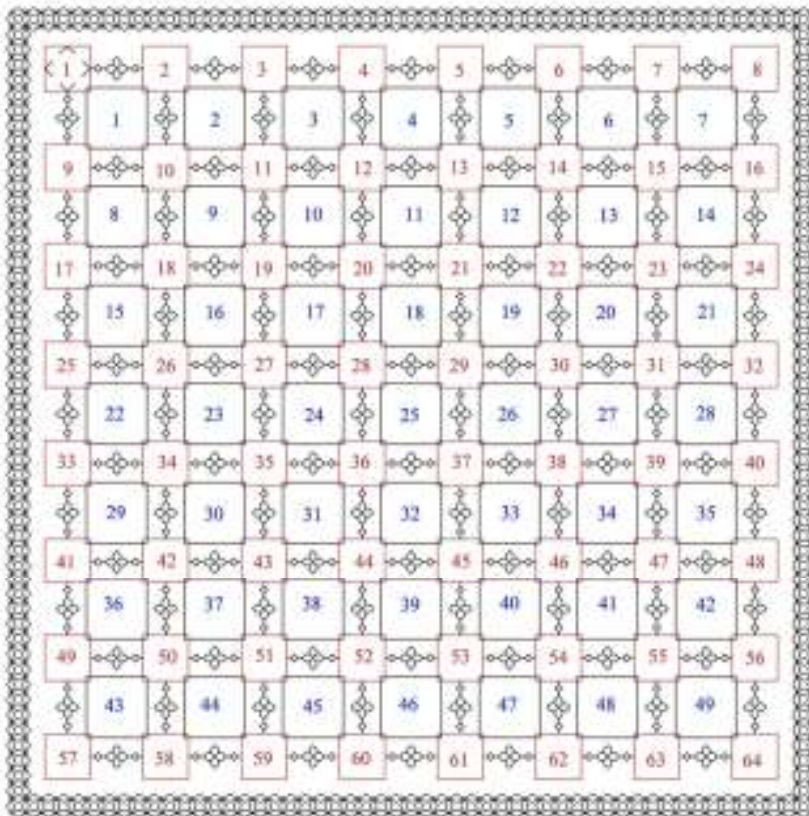


# 'TINY TREASURES'

## Square - Parts 3 - 4



**Colour, Black & Gold**  
**12 monthly parts!**



#### Square Pattern Layout

Design area: 15.29 x 15.29 inches

Material: Zweigart 28 count evenweave or 14 count Aida, 22 x 22 inches

64 Flower motifs

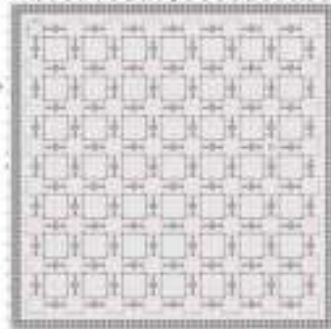
49 Pattern Blocks

112 Mini links

Border  
= 226 Tiny Treasures

Each flower can be a different colour

Each pattern block can be a different colour



### Square Design Parts 3 & 4

Design area: 15.29 x 15.29 inches

Stitches: 214 x 214

#### Material:

Zweigart 28 count evenweave or 14 count

Aida, 22 x 22 inches

If 25 count Lugana is used: 24 x 24 inches

#### Stitches used:

Back stitch, one strand of floss

Cross stitch two strands of floss

Evenweave: stitches are worked over 2 threads unless the pattern indicates otherwise.

Cross stitch: stitches are worked over two threads or one block unless the pattern indicates otherwise.

#### 1. Glue Pages 2 to Page 3, and Pages 3 to 4 to complete the full width of the design.

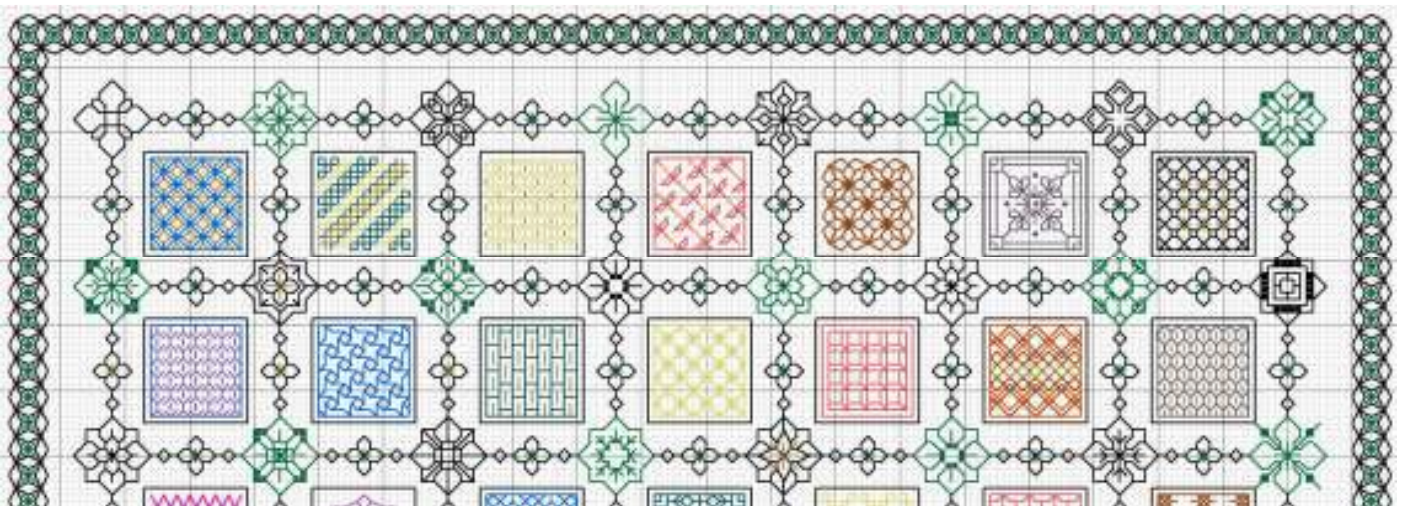
The design will be worked from the **TOP** left hand corner across the width of the pattern

#### 2. Work Parts 3 and 4 Square Design as follows:

Work flower motifs and pattern blocks finishing off the ones from Part 2

Continue the border using one strand of

floss. Add beads after the whole embroidery has been completed.

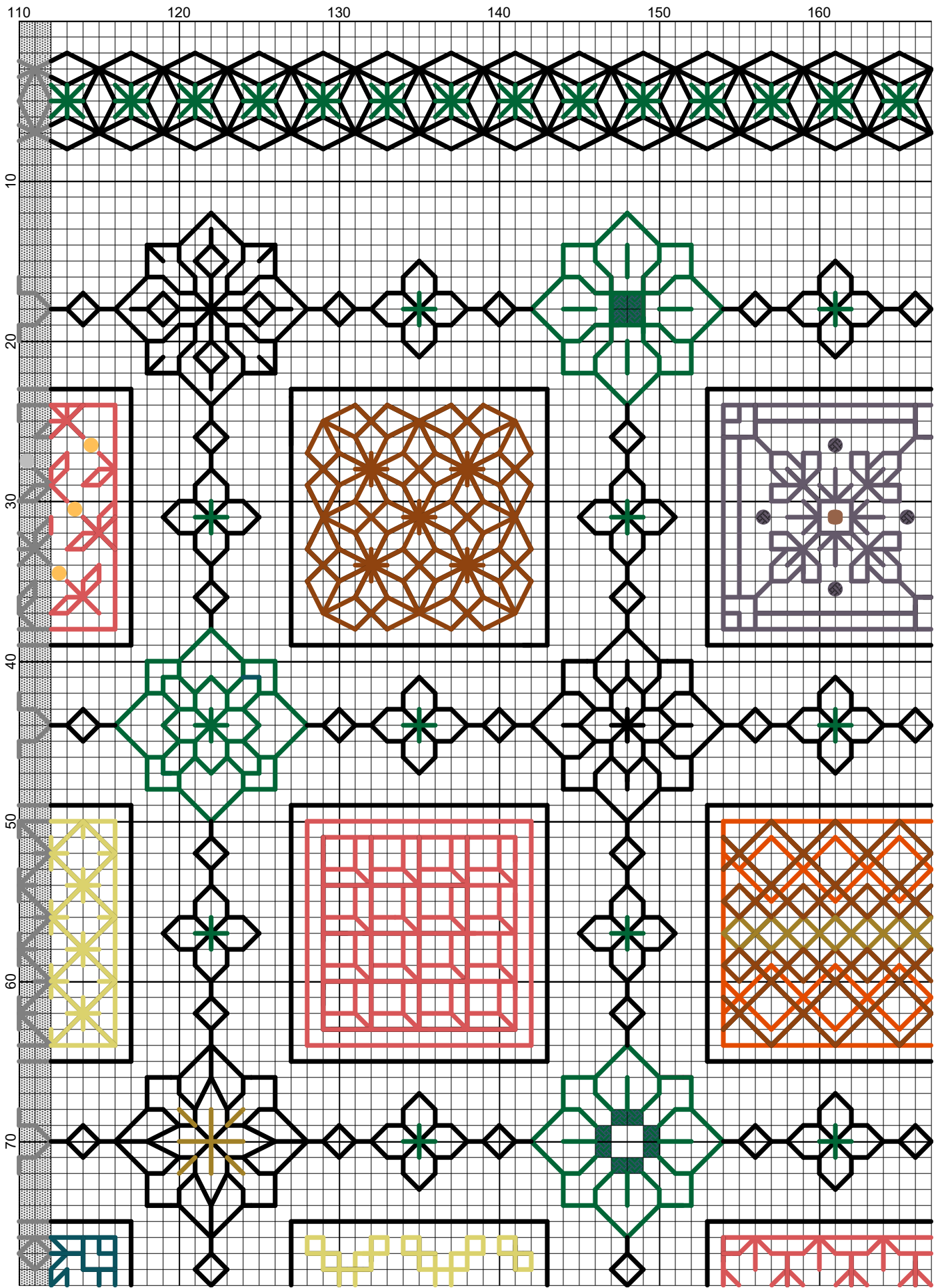


*Parts 1, 2, 3 and 4 Chart shows the full width of the design*

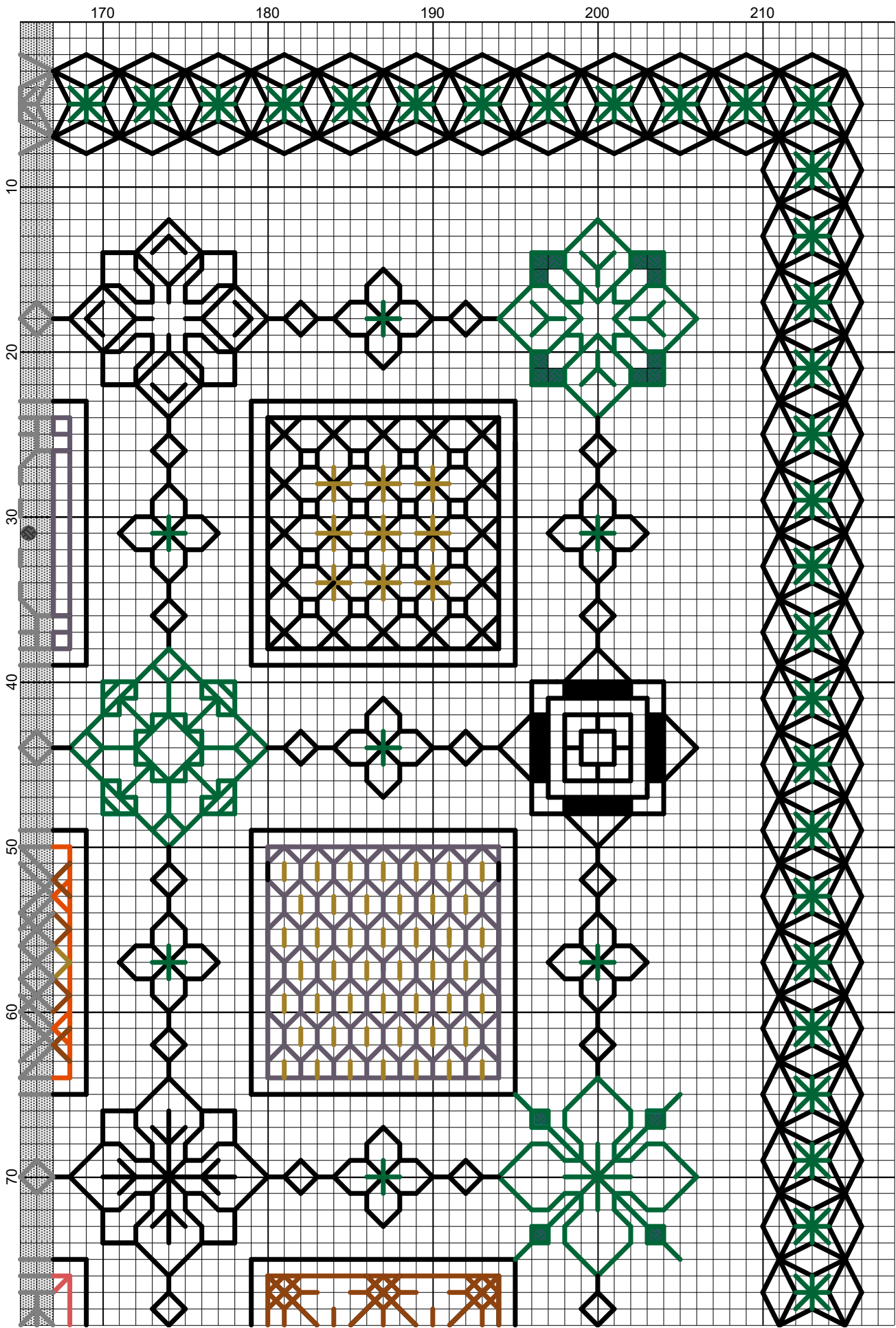
I hope you enjoy reading the information and working the design.

If you have any queries please contact: [lizalmond@blackworkjourney.co.uk](mailto:lizalmond@blackworkjourney.co.uk)

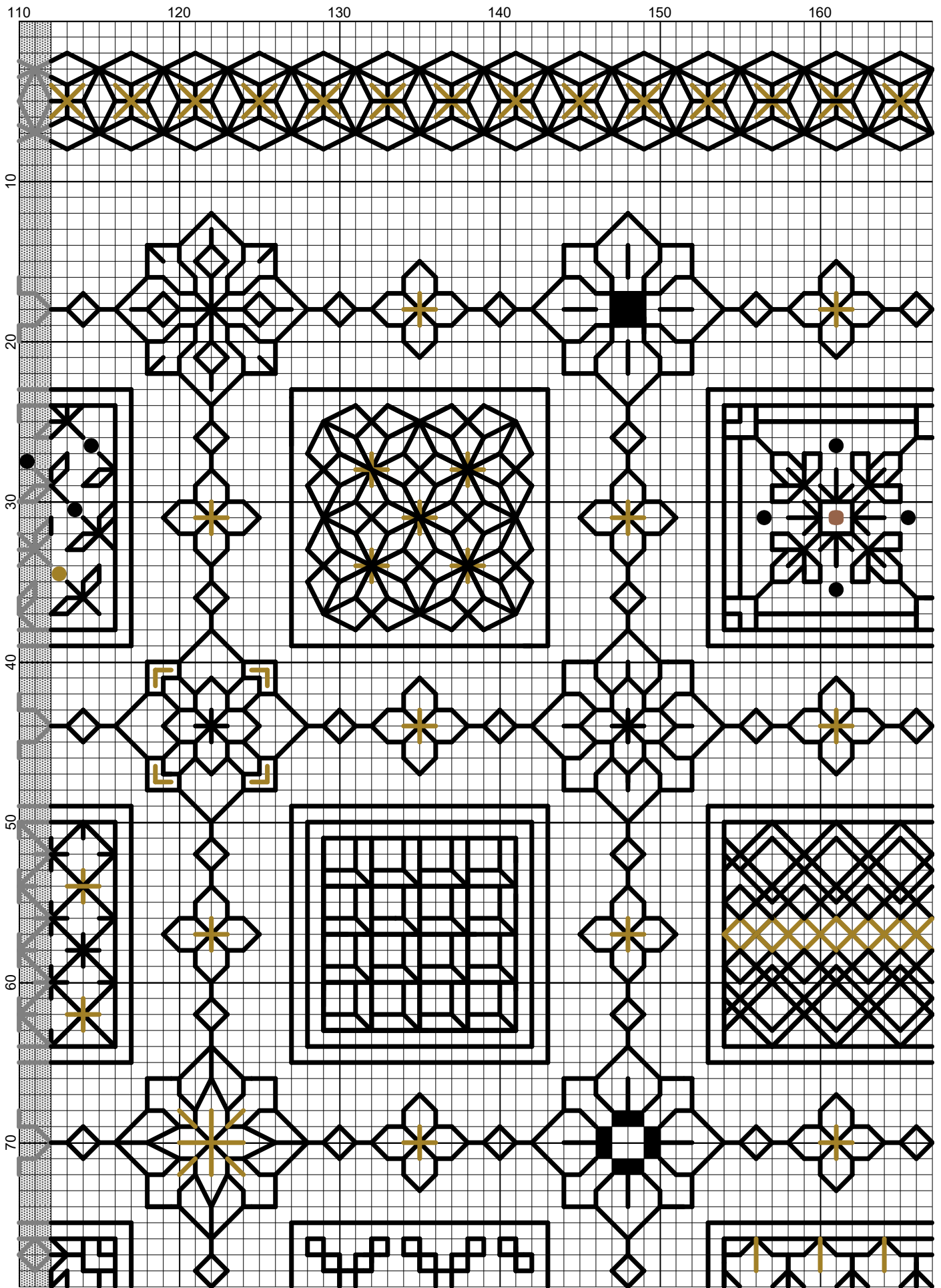
Tiny Treasures Square



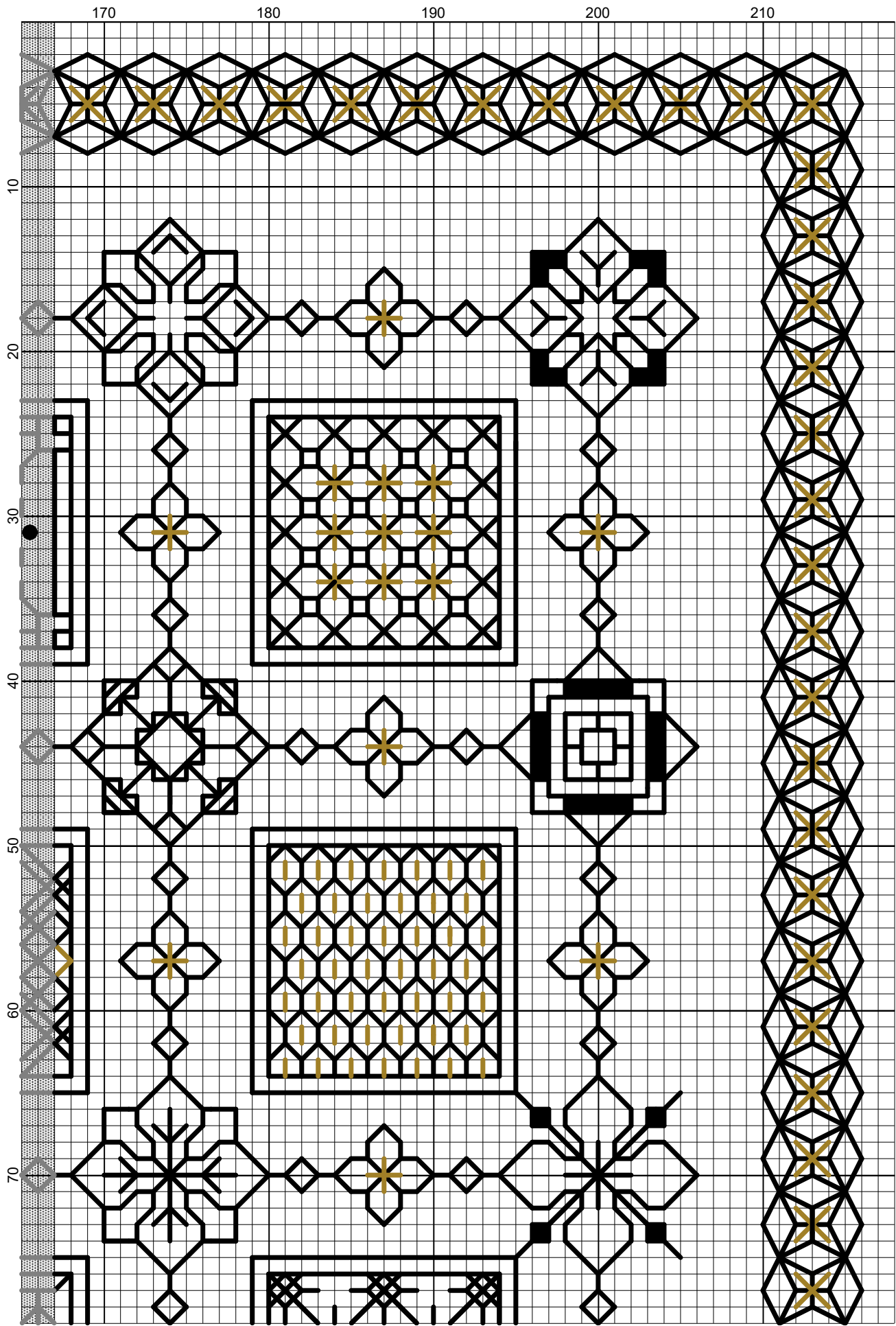
Tiny Treasures Square



Elizabeth Almond

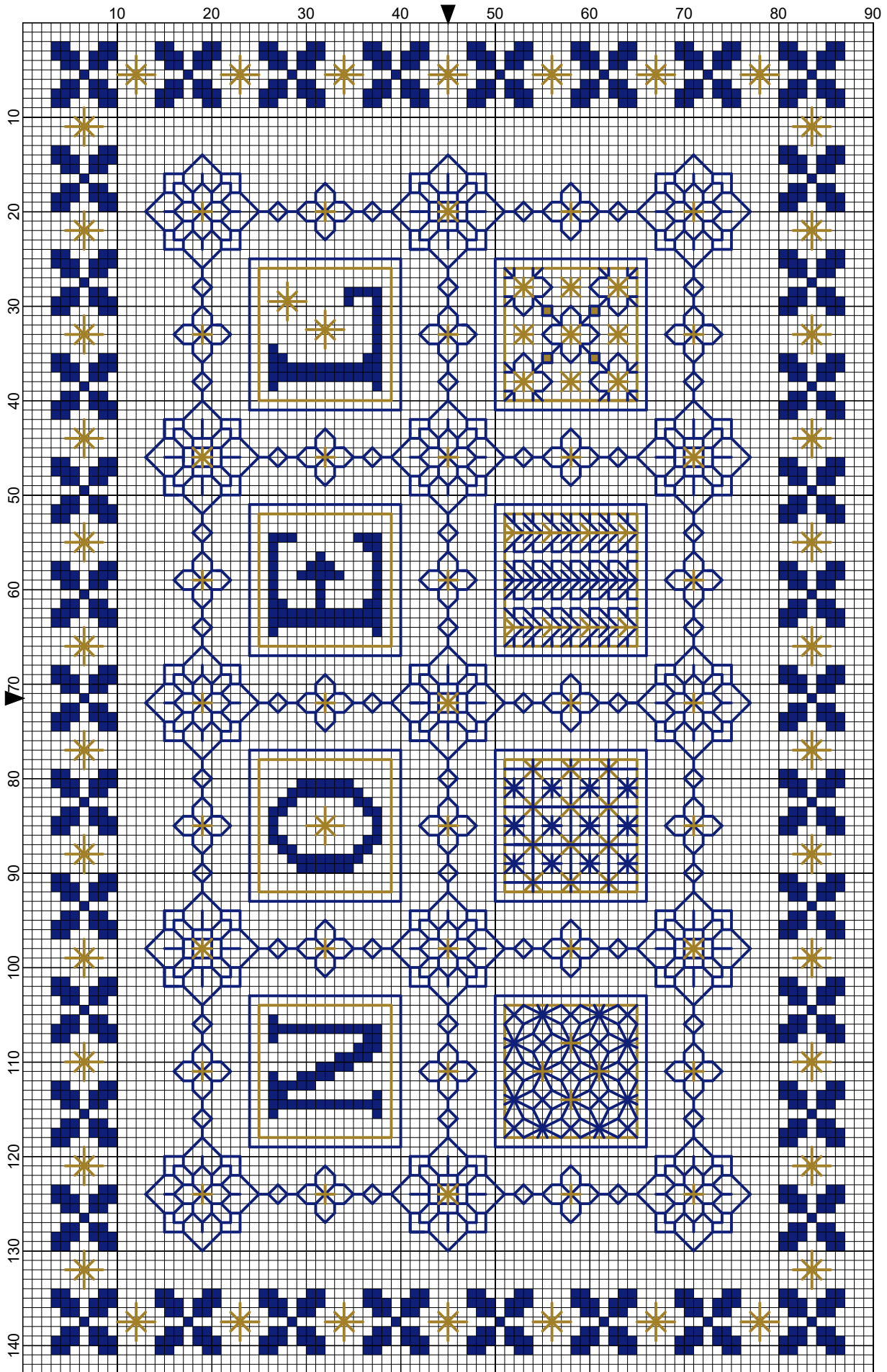


Elizabeth Almond



Elizabeth Almond

Blue and Gold Christmas Sampler



Elizabeth Almond

# Blue and Gold Christmas Sampler

---

**Author:** Elizabeth Almond  
**Copyright:** Elizabeth Almond  
**Grid Size:** 90W x 143H  
**Design Area:** 6.00" x 9.93" (84 x 139 stitches)

**Legend:**

■ [2] DMC-796 ANC-134 DLE- royal blue - dk

**Call Outs:**

■ [2] DLE-E3852 Dark Gold DMC Light Effects

**Backstitch Lines:**

— DMC-796 royal blue - dk — DLE-E3852 Dark Gold

**Blue and Gold Christmas Sampler**

Extend the Christmas sampler, alter the arrangement and colours to include all the patterns and letters.

**Material:**

Zweigart 28 count evenweave or 14 count Aida 10 x 13 inches

Tapestry needle No 24

Small embroidery ring

**Stitches used:**

Back stitch, one strand

Cross stitch, two strands

Eyelet stitch, one strand

**Method:**

Edge the fabric to prevent fraying. Fold the fabric into four quarters to find the centre point. Mount the embroidery in the ring so that the fabric is 'drum' tight.

1. Work the central motif first.

2. Work the letters or fillers in turn using the colours selected. Work the holly border in two strands of floss.

3. Place the finished embroidery face down on a soft towel and press lightly.

**Small cushion:**

Place the two pieces back to back with the embroidery inside. Machine stitch around the edge leaving a small opening to insert a small cushion pad. Slip stitch closed. Add cord edging (optional)

I hope you enjoy working this design as much as I have enjoyed creating it.

If you have any queries please contact:

[lizalmond@blackworkjourney.co.uk](mailto:lizalmond@blackworkjourney.co.uk)